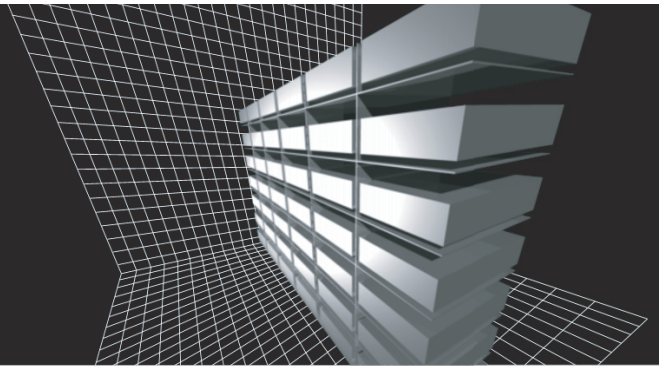


*Cable Network Management Suite*

# CABLE MODEM TEST PLATFORM



# LIVECD QUICK START GUIDE



# CABLE MODEM TEST PLATFORM LIVECD QUICK START GUIDE



Copyright © 2001-2013

Cable Modem Test Platform LiveCD Quick Start Guide

Revision: 1.6

Revision Date: 12/08/2014

4005 Avenida de La Plata

Oceanside, California 92056

USA

Email: [info@promptlink.com](mailto:info@promptlink.com)

[www.promptlink.com](http://www.promptlink.com)

Promptlink Communications Inc. proprietary rights are included in the information disclosed herein. Recipient by accepting this document agrees that neither this document nor the information disclosed herein nor any part thereof shall be reproduced or transferred to other documents or used or disclosed to others for manufacturing or any other purpose except as specifically authorized in writing by Promptlink Communications corporation.

All rights reserved under the copyright laws by Promptlink Communications Inc.

The information in this document is subject to change without notice.

The software described in this document is furnished under a license and may be used or copied only in accordance with the terms of such license.

---

# CONTENTS

<b>Contents</b> .....	<b>5</b>
<b>LiveCD Quick Start</b> .....	<b>7</b>
Creating Bootable LiveCD Media from ISO .....	7
Creating Bootable CD/DVD-R .....	7
Creating Bootable USB Flash Drive .....	8
Booting the Server from LiveCD .....	11



# LIVECD QUICK START

## Creating Bootable LiveCD Media from ISO

---

The bootable LiveCD image may be created using either a CD/DVD-R or a USB flash drive.

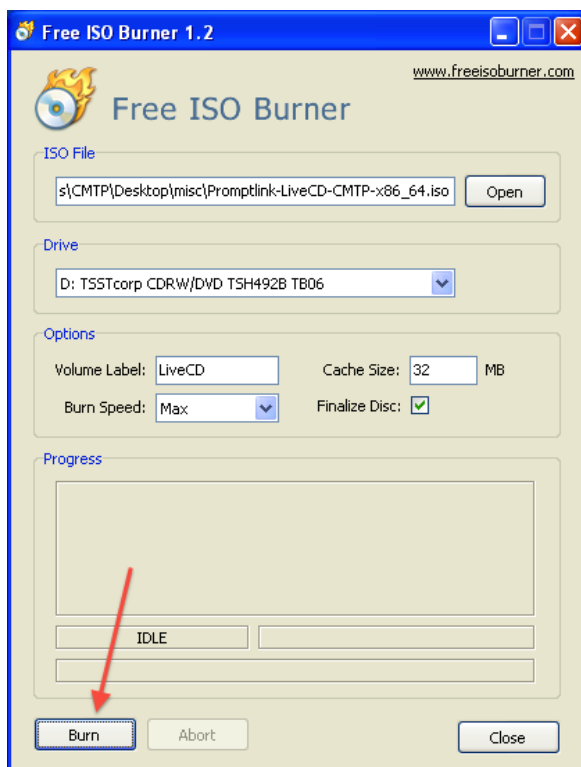
### Creating Bootable CD/DVD-R

- 1 To the test station computer download the LiveCD ISO image from the following URL:  
[http://livecd.promptlink.com/Promptlink-LiveCD-CMTP-x86\\_64.iso](http://livecd.promptlink.com/Promptlink-LiveCD-CMTP-x86_64.iso)
- 2 Download and install FreeISOBurner software from the following URL:  
<http://www.freeisoburner.com>
- 3 Insert a blank CD-R/DVR-R into the test station computer

**WARNING:** *It is not recommended to use DVD+R/RW, because computers with older CD/DVD drives might not read this disk, so the server will not boot. We recommend to use: CD-R/RW, DVD-R/RW*

---

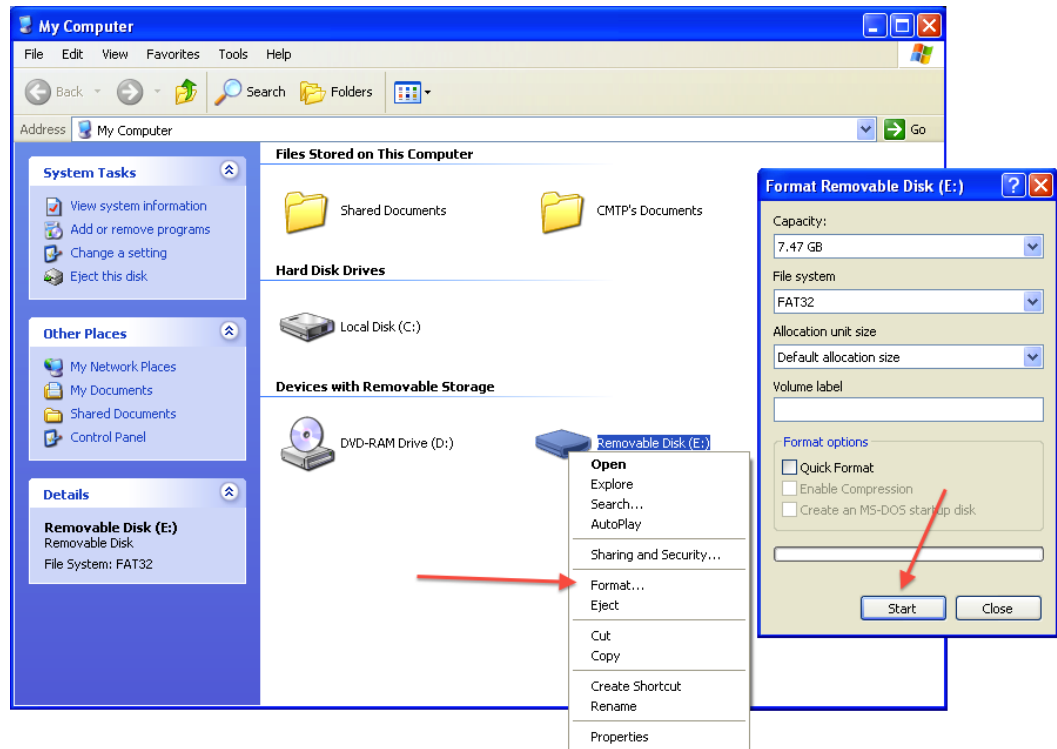
- 4 Run FreeISOBurner, click the **Open** button and navigate to the path of the LiveCD ISO file that was downloaded in step 1 ([Figure 1-1 "Free ISO Burner Dialog Box"](#))
- 5 Click the **Finalize Disc** check box to enable the option, and type in a **Volume Label** if desired
- 6 To start burning the ISO, click the **Burn** button ([Figure 1-1 "Free ISO Burner Dialog Box"](#))



**Figure 1-1** Free ISO Burner Dialog Box

## Creating Bootable USB Flash Drive

- 1 To the test station computer download the LiveCD ISO image from the following URL:  
[http://livecd.promptlink.com/Promptlink-LiveCD-CMTP-x86\\_64.iso](http://livecd.promptlink.com/Promptlink-LiveCD-CMTP-x86_64.iso)
- 2 Download and install UNetbootin software from the following URL:  
<http://unetbootin.sourceforge.net/unetbootin-windows-latest.exe>
- 3 Insert a USB flash drive into the test station computer
- 4 Reformat the flash drive with FAT32 file system ([Figure 1-2 "Formatting USB Flash Drive to FAT32 File System"](#))



**Figure 1-2** Formatting USB Flash Drive to FAT32 File System

- 5 Run UNetbootin, click the **Diskimage** radio button, select the **ISO** item and navigate to the path of the LiveCD ISO file, that was downloaded in step 1 ([Figure 1-3 "UNetbootin Dialog Box"](#))
- 6 Select the correct drive letter for the USB flash drive and click **OK** to create the LiveCD USB ([Figure 1-3 "UNetbootin Dialog Box"](#), [Figure 1-4 "UNetbootin: Extracting Files"](#))

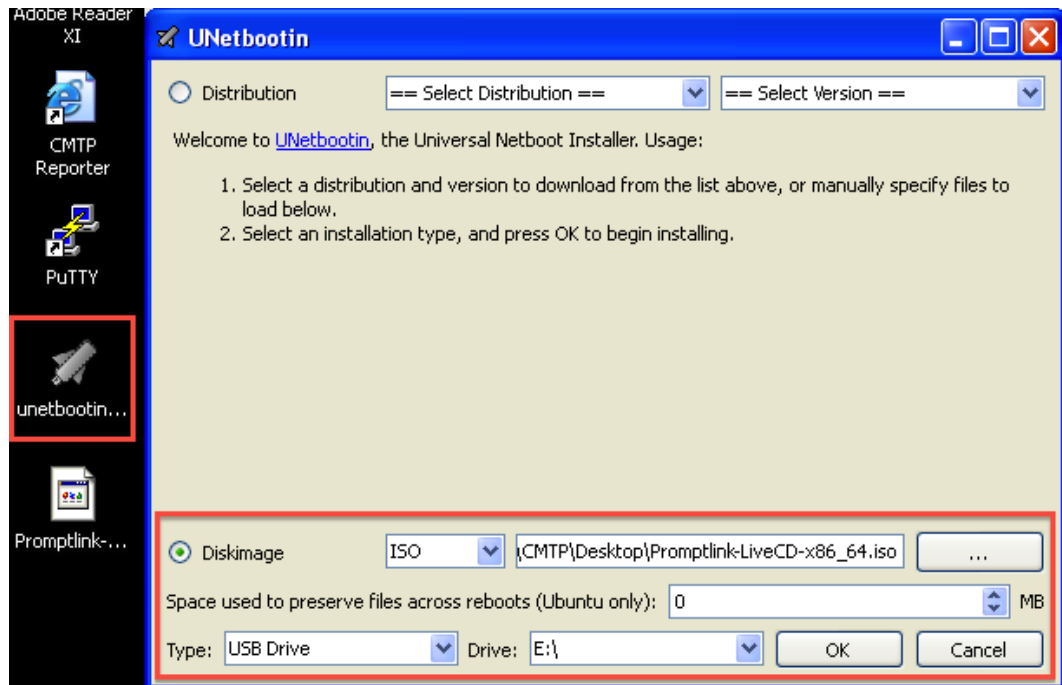


Figure 1-3 UNetbootin Dialog Box

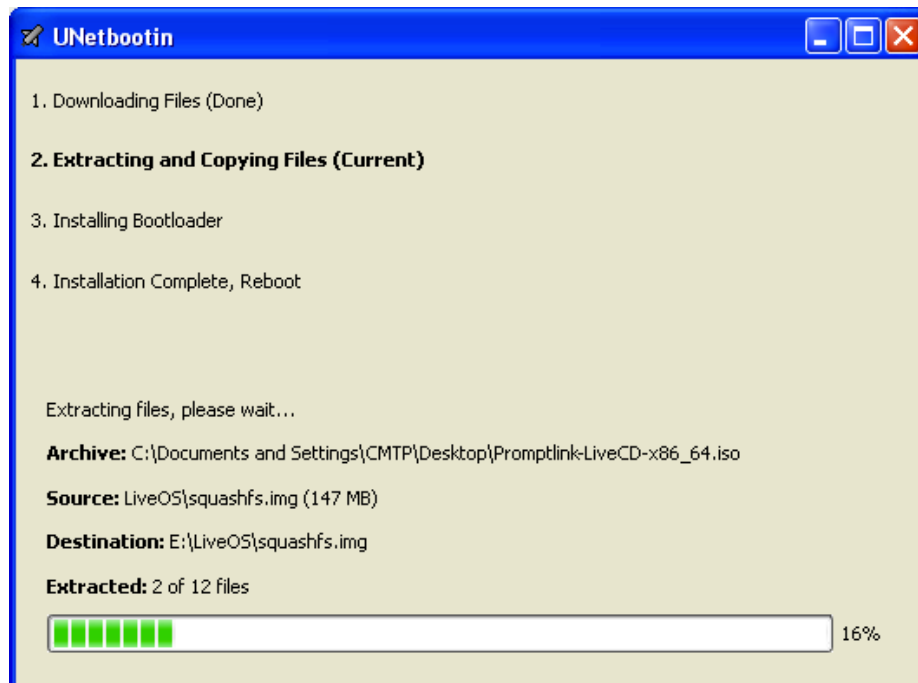
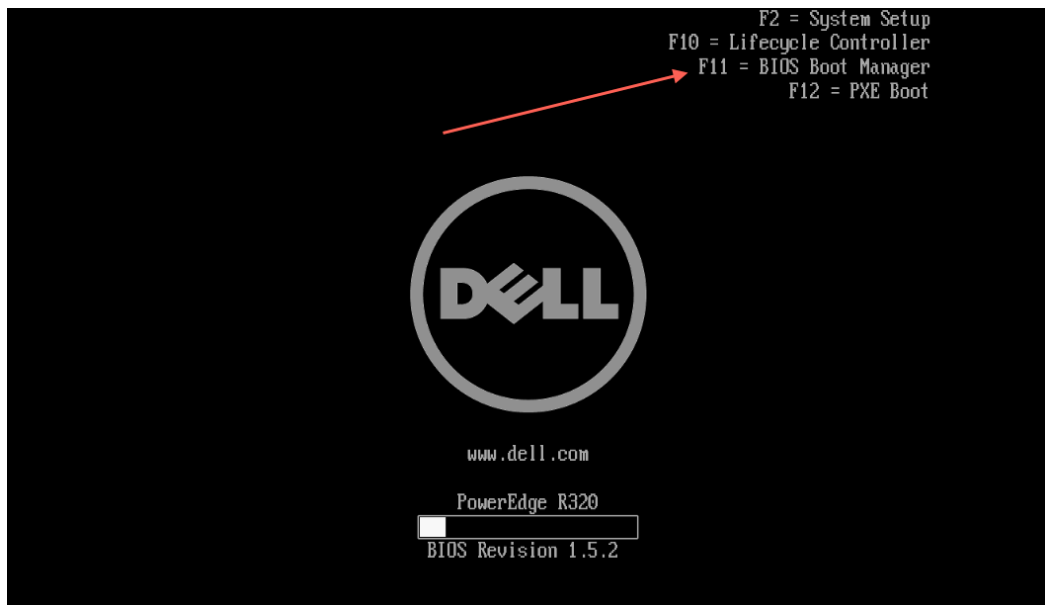


Figure 1-4 UNetbootin: Extracting Files

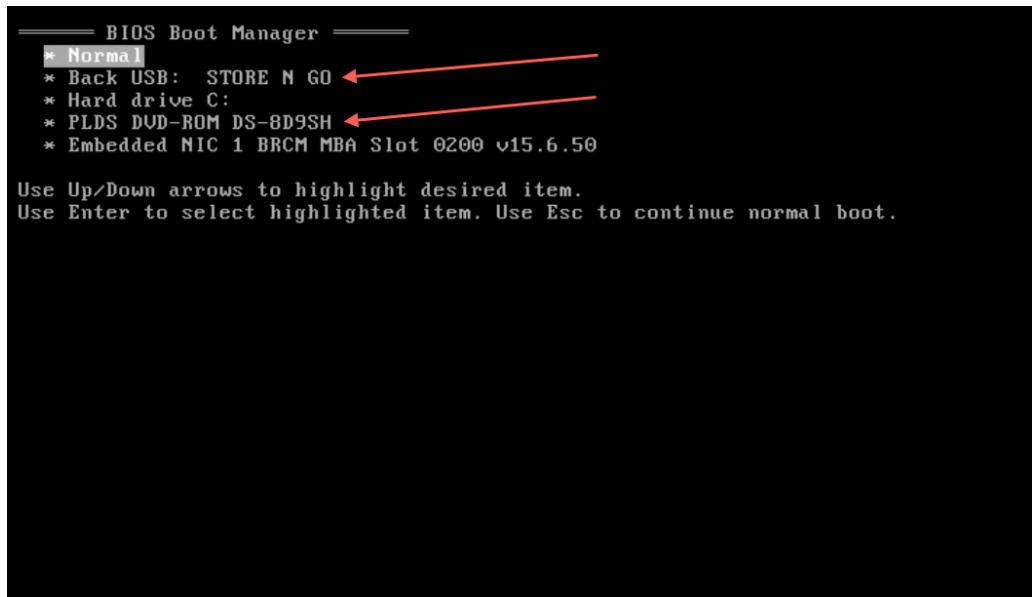
## Booting the Server from LiveCD

- 1 Connect keyboard and mouse to the CMTP server
- 2 Insert the bootable media you created in the steps above ([“Creating Bootable CD/DVD-R”](#), [“Creating Bootable USB Flash Drive”](#))
- 3 Reboot the server by pressing **CTRL+ALT+DEL** or by pushing the **Reset** button on the server
- 4 Watch for the boot menu options in the top right corner and press F11 to load the Boot Manager ([Figure 1-5 “Dell PowerEdge R320: Boot Menu Options”](#))



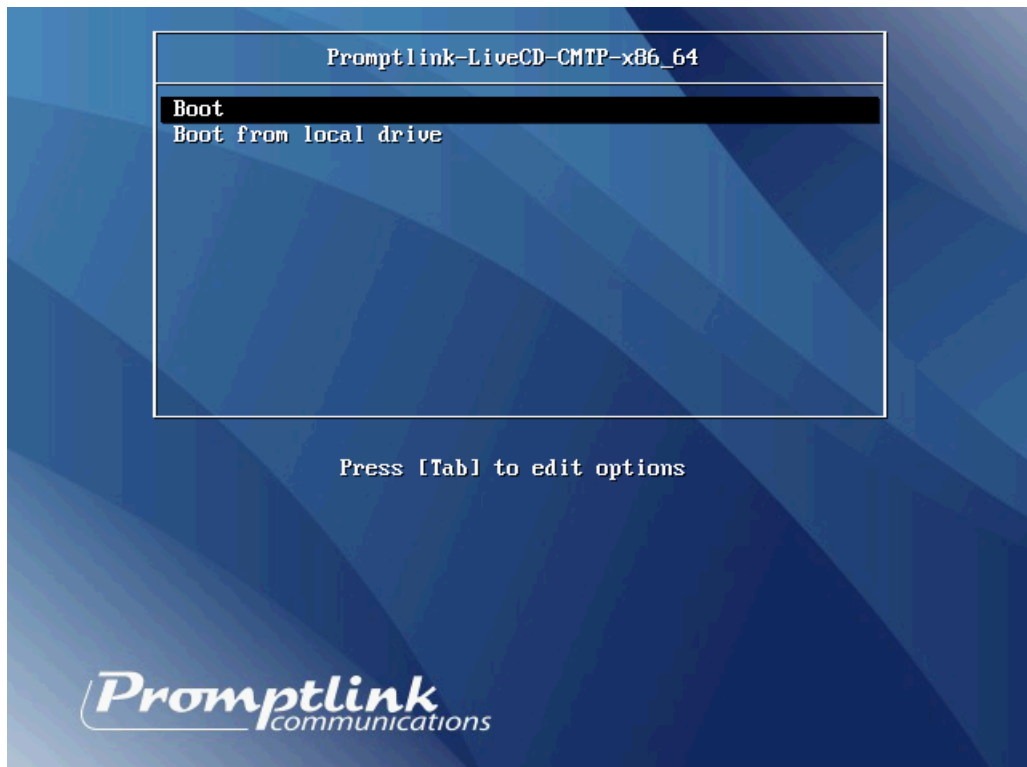
**Figure 1-5** Dell PowerEdge R320: Boot Menu Options

- 5 Choose the appropriate boot device (DVD-ROM or USB) ([Figure 1-6 “Dell PowerEdge R320: BIOS Boot Manager”](#))

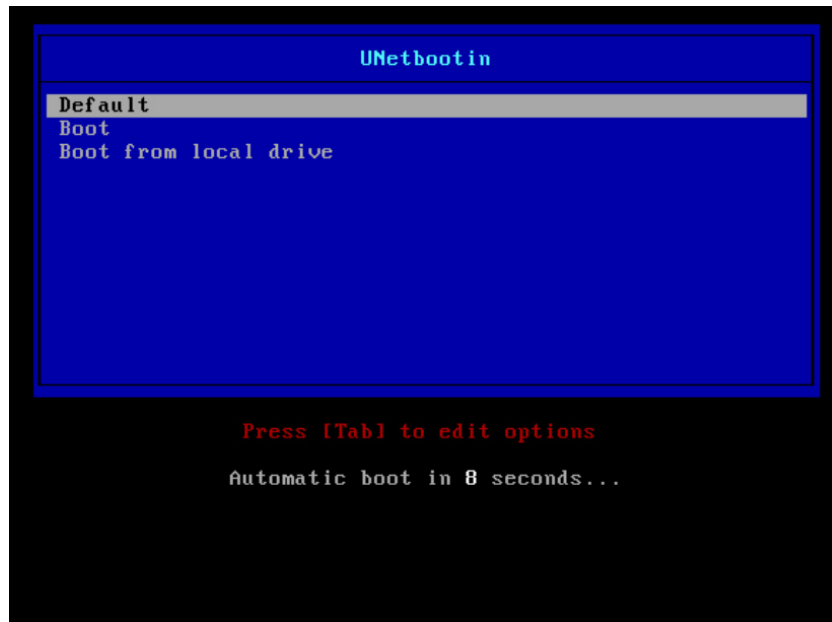


**Figure 1-6** Dell PowerEdge R320: BIOS Boot Manager

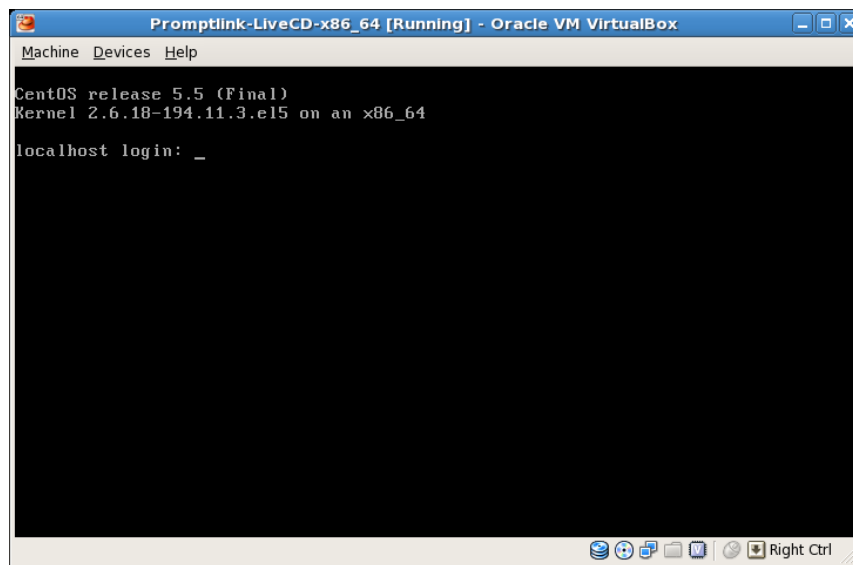
- 6 On the LiveCD or UNetbootin menu, select the **Boot** option ([Figure 1-7 "Server Booting Using LiveCD"](#), [Figure 1-8 "Server Booting Using UNetbootin"](#))



**Figure 1-7** Server Booting Using LiveCD



**Figure 1-8** Server Booting Using UNetbootin



**Figure 1-9** Booted Server

- 7** Test if the server booted up properly by running a ping 172.16.0.11 command from the CMTF test station or any other computer connected to the CMTF system
- 8** Inform the Promptlink Support Team [support@promptlink.com](mailto:support@promptlink.com) that the server is ready.

